



CM DELMSG 1.3

Convention Manual Leveringsbericht MVA/BB Message

File name : HvR0228v1.5 CM DELMSG 1.3.doc
Date last update : 23 June 2006
Document version/release : 1.5/1.3 (concept means version 0.x)
Document status : definitive
Edifact UNSM : DELMSG D 93A

Copyright: © *FlorEcom*, 2005

All rights reserved. No part of this publication may be reproduced, stored in a retrieval system, or transmitted, in any form, or by any means, electronic, mechanical, photocopying, recording or otherwise, without prior permission, in writing, from *FlorEcom*.

For permission contact *FlorEcom*, Postbus 205, 1430 AE Aalsmeer, The Netherlands

TABLE OF CONTENTS

1. DOCUMENT HISTORY.....	4
2. LEVERINGBERICHT MVA/BB DELMSG MESSAGE D.96A.....	5
2.1 HEADING SECTION.....	5
2.2 DETAIL SECTION.....	5
3. MESSAGE STRUCTURE.....	5
4. SEGMENTS	6
5. EDIFACT DELMSG DOCUMENTS (EXAMPLES).....	30
5.1 EXAMPLE FLORAHOLLAND BB.....	30
5.2 EXAMPLE BLOEMENVEILING AALSMEER MVA.....	31

1. Document history

Version	Author	Changes
0.1	Hans van Rossen	Initial version
1.0	Hans van Rossen	Definitive version
1.1	Hans van Rossen	Review VBA
1.2	Hans van Rossen	Releaseronde 2005-2 verwerkt.
1.3	Hans van Rossen	Review CMG
1.4	Hans van Rossen	Onvolkomenheden t.o.v. 1.2 versie.
1.5	Hans van Rossen	Voorbeelden toegevoegd

	Date	Name/Function	Initial
Accepted		Hans van Rossen (author)	
Checked		R. van Sassen (FloraHolland) Mirna den Blanken (VBA) B. Ensink (HBAG)	
Quality check by FlorEcom		G. Heemskerk (FlorEcom)	
Approved by Workgroup CMG		M.J. van Rossen (vz. workgroup)	
Accepted by Workgroup Standards		I. van Ham (vz. workgroup)	

2. Leveringbericht MVA/BB DELMSG Message D.96A

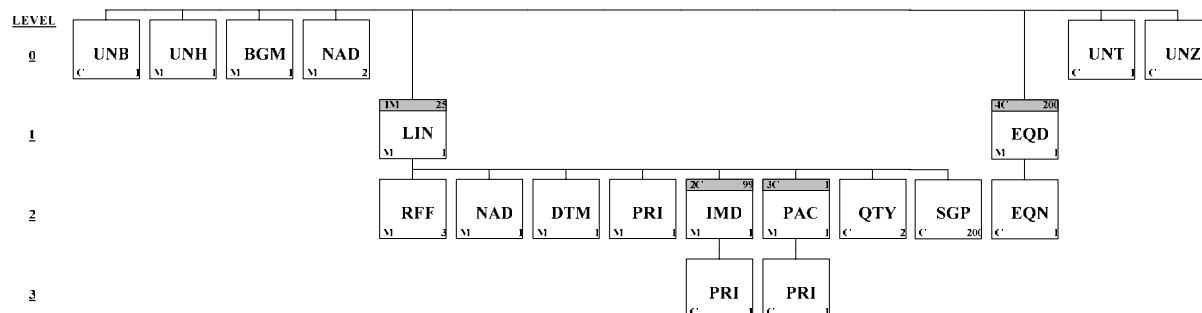
2.1 Heading Section

	<u>Pos. No.</u>	<u>Seg. ID</u>	<u>Name</u>	<u>Req. Des.</u>	<u>Max.Use</u>	<u>Group Repeat</u>	<u>Notes and Comments</u>
Must Use	010	UNB	Interchange Header	C	1		
	020	UNH	Message Header	M	1		

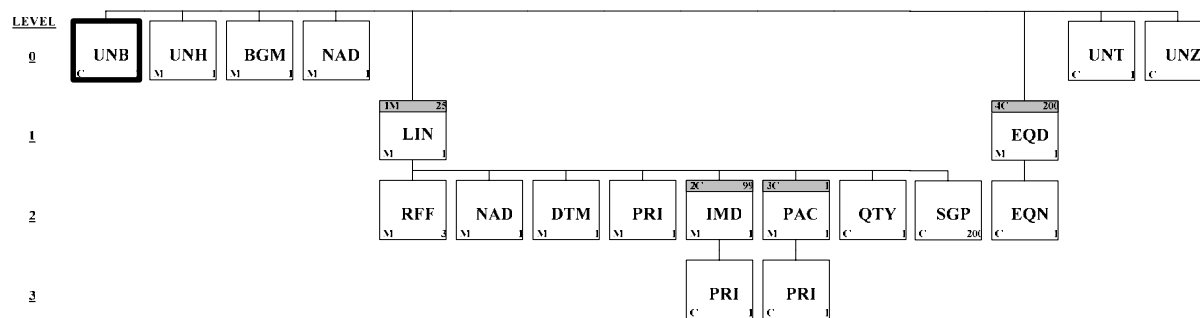
2.2 Detail Section

	<u>Pos. No.</u>	<u>Seg. ID</u>	<u>Name</u>	<u>Req. Des.</u>	<u>Max.Use</u>	<u>Group Repeat</u>	<u>Notes and Comments</u>
	030	BGM	Beginning of Message	M	1		
	040	NAD	Name and Address	M	2		
Segment Group 1: LIN-RFF-NAD-DTM-PRI-SG2-SG3-QTY-SGP				M		25	
	060	LIN	Line Item	M	1		
	070	RFF	Reference	M	3		
	100	NAD	Name and Address	M	1		
	110	DTM	Date/Time/Period	M	1		
	120	PRI	Price Details	M	1		
Segment Group 2: IMD-PRI				C		99	
	125	IMD	Item Description	M	1		
	128	PRI	Price Details	C	1		
Segment Group 3: PAC-PRI				C		1	
	136	PAC	Package	M	1		
	146	PRI	Price Details	C	1		
	156	QTY	Quantity	C	2		
	176	SGP	Split Goods Placement	C	200		
Segment Group 4: EQD-EQN				C		200	
	186	EQD	Equipment Details	M	1		
	196	EQN	Number of Units	C	5		
Must Use	206	UNT	Message Trailer	C	1		
Must Use	216	UNZ	Interchange Trailer	C	1		

3. Message structure



4. Segments

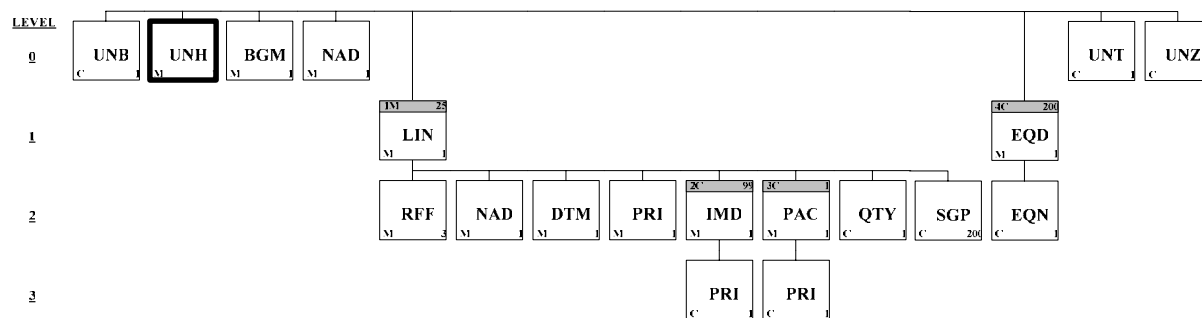


Segment: **UNB** Interchange Header
Position: 010
Group:
Level: 0
Usage: Conditional (Required)
Max Use: 1
Dependency Notes:
Comments:
Notes: Verplicht segment. Functie: begin van een berichtentransmissie.

Data Element Summary

<u>Data Element</u>	<u>Component Element</u>	<u>Name</u>	<u>Attributes</u>
	S001	SYNTAX IDENTIFIER	M
	0001	Syntax identifier	M a4
		UNOA betekent dat gebruik wordt gemaakt van karakterset A. UNOA UN/ECE level A	
	0002	Syntax version number	M n1
		2 Version 2	
	S002	INTERCHANGE SENDER	M
	0004	Sender identification	M an..35
		Identificatie van de verzender. EAN code van de verzendende veiling volgens FlorEcom EAN-codelijst FE Format: an13	
Must Use	0007	Partner identification code qualifier	C an..4
		14 EAN (International Article Numbering Association)	
Not Used	0008	Address for reverse routing	C an..14
	S003	INTERCHANGE RECIPIENT	M
Must Use	0010	Recipient identification	C an..35
		Identificatie ontvanger, bijvoorbeeld kopernummer, postbusnummer. FE format: an..13	
Must Use	0007	Partner identification code qualifier	C an..4
		ZZ Identificatie is onderling overeengekomen	
	0014	Routing address	C an..14
		Adresspecificatie. Eventuele verdere specificatie van of voor de ontvanger van het bericht.	
	S004	DATE AND TIME OF PREPARATION	M
	0017	Date of preparation	M n6
		FE-note: Datum van aanmaak van de transmissie in formaat YYMMDD	
	0019	Time of preparation	M n4
		FE-note: Tijd van aanmaak van de transmissie in formaat HHMM (00<=HH<=23)	

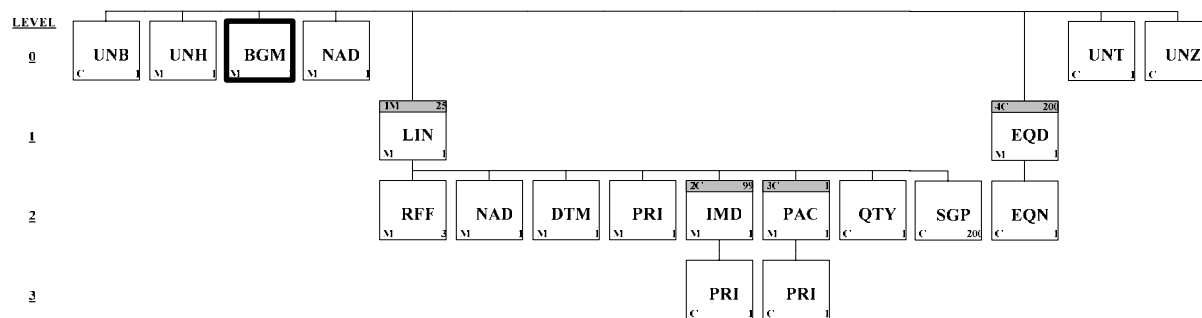
	0020	INTERCHANGE CONTROL REFERENCE	M an..14
		Transmissie identificatienummer. Een door de verzender te genereren uniek nummer om de transmissie te identificeren.	
	S005	RECIPIENTS REFERENCE PASSWORD	C
	0022	Recipient reference/password	C an..14
		Wachtwoord dat tussen de verzender en ontvanger is afgesproken.	
	0025	Recipient reference/password qualifier	C an2
	0026	APPLICATION REFERENCE	C an..14
		Hierin staan gegevens m.b.t. de software die gebruikt wordt om het bericht aan te maken.	
Not Used	0029	PROCESSING PRIORITY CODE	C a1
Not Used	0031	ACKNOWLEDGEMENT REQUEST	C n1
Not Used	0032	COMMUNICATIONS AGREEMENT ID	C an..35
	0035	TEST INDICATOR	C n1
		Indicatie die aangeeft of een bericht een testbericht is (alleen in testfase).	
		1	Interchange is a test



Segment: UNH Message Header
Position: 020
Group:
Level: 0
Usage: Mandatory
Max Use: 1
Dependency Notes:
Comments:
Notes: Functie: start van een bericht.

Data Element Summary

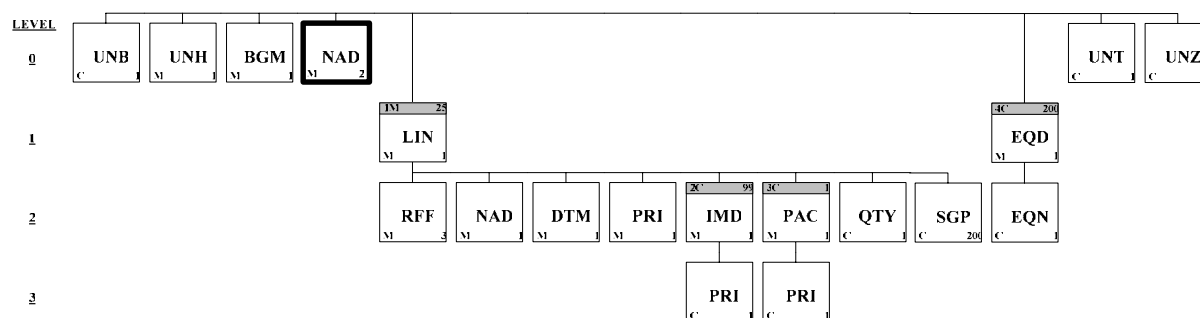
Data Element	Component Element	Name	Attributes
0062		MESSAGE REFERENCE NUMBER	M an..14
S009		MESSAGE IDENTIFIER	M
	0065	Message type identifier	M an..6
		DELMSG FlorEcom Delivery message	
	0052	Message type version number	M an..3
		001	
	0054	Message type release number	M an..3
		003	
	0051	Controlling agency	M an..2
		EF FlorEcom	
Not Used	0057	Association assigned code	C an..6
Not Used	0068	COMMON ACCESS REFERENCE	C an..35
Not Used	S010	STATUS OF THE TRANSFER	C
Not Used	0070	Sequence message transfer number	M n..2
Not Used	0073	First/last sequence message transfer indication	C a1



Segment: **BGM** Beginning of Message
Position: 030
Group:
Level: 0
Usage: Mandatory
Max Use: 1
Dependency Notes:
Comments:
Notes: Functie: wordt gebruikt om het type bericht te specificeren.

Data Element Summary

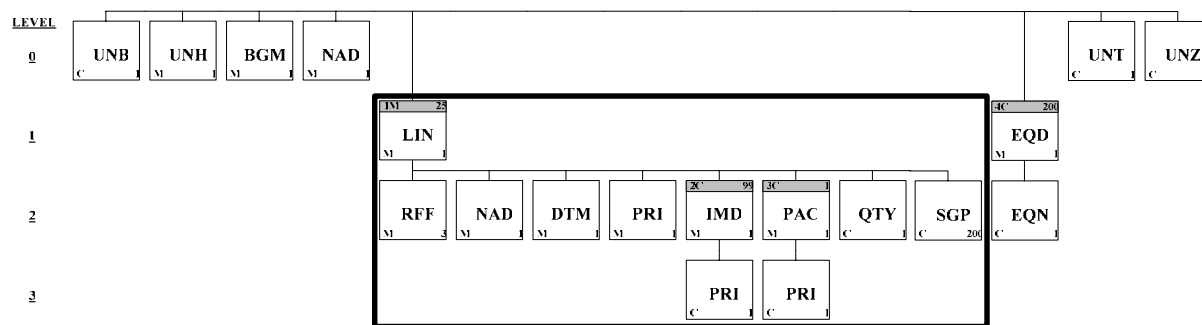
	<u>Data Element</u>	<u>Component Element</u>	<u>Name</u>	<u>Attributes</u>
Must Use	C002		DOCUMENT/MESSAGE NAME	C
Must Use		1001	Document/message name, coded 270 Delivery note	C an..3
Not Used		1131	Code list qualifier	C an..3
Not Used		3055	Code list responsible agency, coded	C an..3
Not Used		1000	Document/message name	C an..35
Not Used	1004		DOCUMENT/MESSAGE NUMBER	C an..35
Not Used	1225		MESSAGE FUNCTION, CODED	C an..3
Not Used	4343		RESPONSE TYPE, CODED	C an..3



Segment: **NAD** Name and Address
Position: 040
Group:
Level: 0
Usage: Mandatory
Max Use: 2
Dependency Notes:
Notes: Functie: wordt gebruikt om het koper- en veilingnummer te specificeren.

Data Element Summary

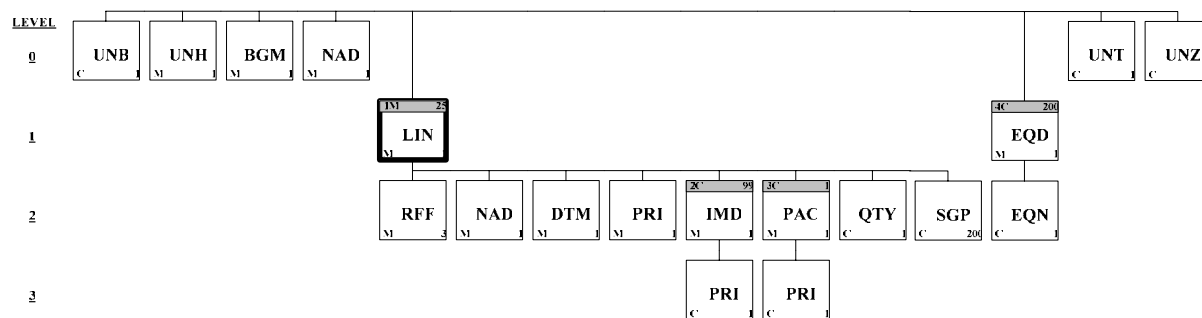
	<u>Data Element</u>	<u>Component Element</u>	<u>Name</u>	<u>Attributes</u>
	3035		PARTY QUALIFIER	M an..3
		BY	Buyer	
			Kopernummer	
		FLA	Flower Auction	
			Veilingcode volgens data elementenlijst van FlorEcom	
Must Use	C082		PARTY IDENTIFICATION DETAILS	C
		3039	Party id identification	M an..17
			FE Format: n..6	
Not Used		1131	Code list qualifier	C an..3
Not Used		3055	Code list responsible agency, coded	C an..3
Not Used	C058		NAME AND ADDRESS	C
Not Used		3124	Name and address line	M an..35
Not Used		3124	Name and address line	C an..35
Not Used		3124	Name and address line	C an..35
Not Used		3124	Name and address line	C an..35
Not Used		3124	Name and address line	C an..35
Not Used	C080		PARTY NAME	C
Not Used		3036	Party name	M an..35
Not Used		3036	Party name	C an..35
Not Used		3036	Party name	C an..35
Not Used		3036	Party name	C an..35
Not Used		3036	Party name	C an..35
Not Used		3045	Party name format, coded	C an..3
Not Used	C059		STREET	C
Not Used		3042	Street and number/p.o. box	M an..35
Not Used		3042	Street and number/p.o. box	C an..35
Not Used		3042	Street and number/p.o. box	C an..35
Not Used	3164		CITY NAME	C an..35
Not Used	3229		COUNTRY SUB-ENTITY IDENTIFICATION	C an..9
Not Used	3251		POSTCODE IDENTIFICATION	C an..9
Not Used	3207		COUNTRY, CODED	C an..3



Group: **LIN** Segment Group 1
Position: 060
Group:
Level: 1
Usage: Mandatory
Max Use: 25

Segment Summary

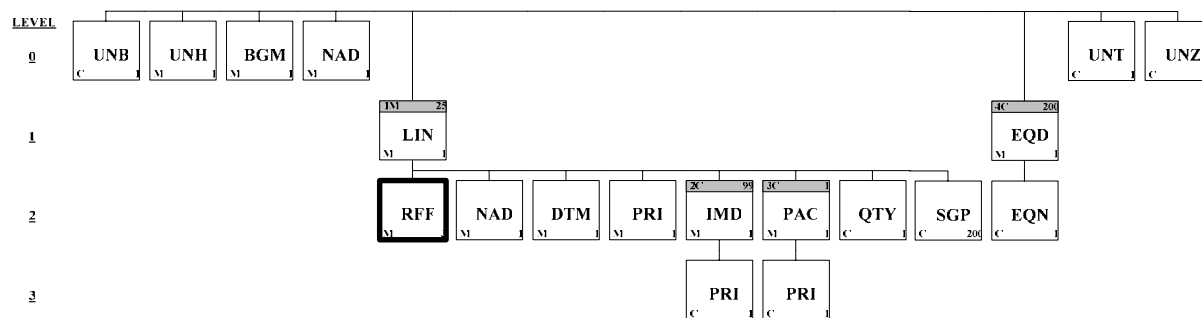
Pos. No.	Seg. ID	Name	Req. Des.	Max. Use	Group: Repeat
060	LIN	Line Item	M	1	
070	RFF	Reference	M	3	
100	NAD	Name and Address	M	1	
110	DTM	Date/Time/Period	M	1	
120	PRI	Price Details	M	1	
		Segment Group 2	C		99
		Segment Group 3	C		1
156	QTY	Quantity	C	1	
176	SGP	Split Goods Placement	C	200	



Segment: **LIN** Line Item
Position: 060 (Trigger Segment)
Group: Segment Group 1 Mandatory
Level: 1
Usage: Mandatory
Max Use: 1
Dependency Notes:
Comments:
Notes: Functie: wordt gebruikt om het artikel te specificeren.

Data Element Summary

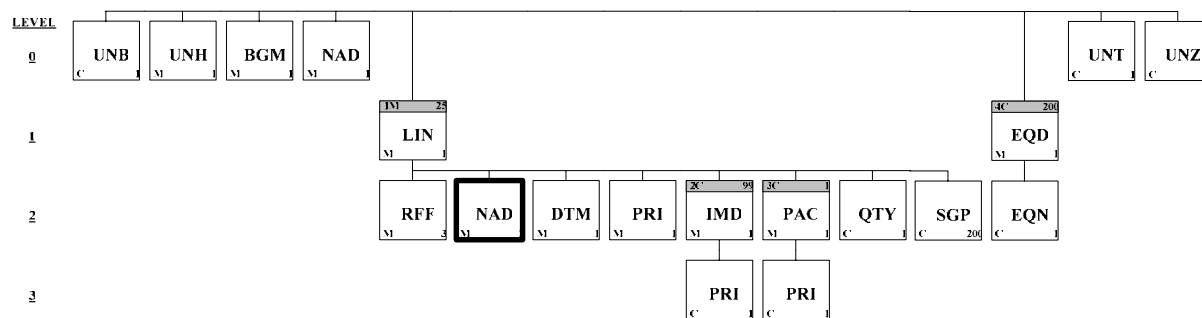
	<u>Data Element</u>	<u>Component Element</u>	<u>Name</u>	<u>Attributes</u>
Not Used	1082		LINE ITEM NUMBER	C n..6
Not Used	1229		ACTION REQUEST/NOTIFICATION, CODED	C an..3
Must Use	C212		ITEM NUMBER IDENTIFICATION	C
Must Use		7140	Item number Artikelcode FE Format: n..7	C an..35
Must Use		7143	Item number type, coded VBN Vereniging van Bloemenveilingen in Nederland	C an..3
Must Use		1131	Code list qualifier ART Artieklcodetabel	C an..3
Must Use		3055	Code list responsible agency, coded EF Stichting FlorEcom	C an..3
Not Used	5495		SUB-LINE INDICATOR, CODED	C an..3
Not Used	1222		CONFIGURATION LEVEL	C n..2
Not Used	7083		CONFIGURATION, CODED	C an..3



Segment: **RFF** Reference
Position: 070
Group: Segment Group 1 Mandatory
Level: 2
Usage: Mandatory
Max Use: 3
Dependency Notes:
Comments:
Notes: Functie: wordt gebruikt voor referentie naar:
 - het aanvoerbriev-volnummer en eventueel de aanvoerbriev-volletter te specificeren.
 - De controle indicatie van BB/MVA
 - Het koperordernummer (of BB/MVA ordernummer)

Data Element Summary

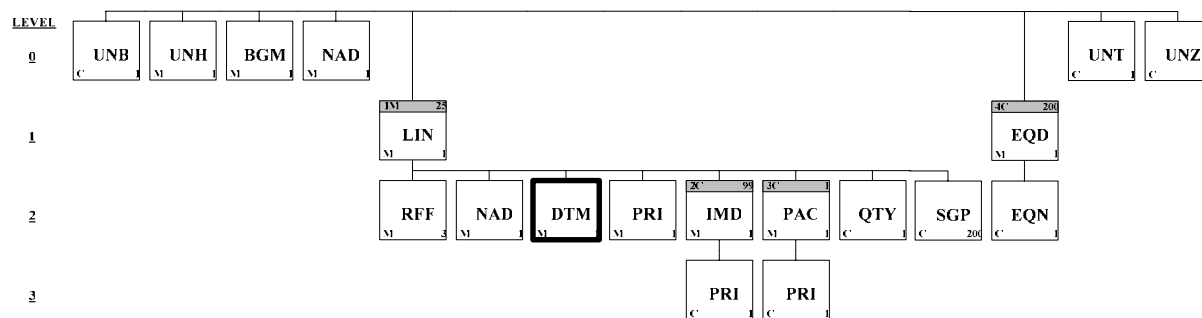
<u>Data Element</u>	<u>Component Element</u>	<u>Name</u>	<u>Attributes</u>
C506		REFERENCE	M
	1153	Reference qualifier	M an..3
		ACE	Related document number
			Aanvoerbrievvolnummer en letter, verplicht segment
		CKN	Checking number
			Controle indicatie, geeft aan welke controle door MVA/BB is uitgevoerd.
		ON	Order number (purchase)
			Ordernummer van de koper, en als deze niet bekend is, ordernummer van MVA/BB
Must Use	1154	Reference number	C an..35
		FE Format: an..13	
	1156	Line number	C an..6
		Partij aanvoerbrievvolletter bij 1153=ACE	
		Orderregelnummer bij 1153=ON	
		FE Format: an..3	
	4000	Reference version number	C an..35
		Oorsprong ordernummer zoals ingevuld in 1154 bij 1153=ON	
		0 = Koper	
		1 = MVA/BB	
		Fe Format: n1	



Segment: **NAD** Name and Address
Position: 100
Group: Segment Group 1 Mandatory
Level: 2
Usage: Mandatory
Max Use: 1
Dependency Notes:
Comments:
Notes: Functie: wordt gebruikt om het aanvoerdernummer te specificeren.

Data Element Summary

	<u>Data Element</u>	<u>Component Element</u>	<u>Name</u>	<u>Attributes</u>
	3035		PARTY QUALIFIER	M an..3
			MF Manufacturer of goods	
Must Use	C082		PARTY IDENTIFICATION DETAILS	C
		3039	Party id identification	M an..17
			Aanvoerdernummer	
			FE Format: n..6	
Not Used		1131	Code list qualifier	C an..3
Not Used		3055	Code list responsible agency, coded	C an..3
Not Used	C058		NAME AND ADDRESS	C
Not Used		3124	Name and address line	M an..35
Not Used		3124	Name and address line	C an..35
Not Used		3124	Name and address line	C an..35
Not Used		3124	Name and address line	C an..35
Not Used		3124	Name and address line	C an..35
Not Used	C080		PARTY NAME	C
Not Used		3036	Party name	M an..35
Not Used		3036	Party name	C an..35
Not Used		3036	Party name	C an..35
Not Used		3036	Party name	C an..35
Not Used		3036	Party name	C an..35
Not Used		3045	Party name format, coded	C an..3
Not Used	C059		STREET	C
Not Used		3042	Street and number/p.o. box	M an..35
Not Used		3042	Street and number/p.o. box	C an..35
Not Used		3042	Street and number/p.o. box	C an..35
Not Used	3164		CITY NAME	C an..35
Not Used	3229		COUNTRY SUB-ENTITY IDENTIFICATION	C an..9
Not Used	3251		POSTCODE IDENTIFICATION	C an..9
Not Used	3207		COUNTRY, CODED	C an..3



Segment: **DTM** Date/Time/Period
Position: 110
Group: Segment Group 1 Mandatory
Level: 2
Usage: Mandatory
Max Use: 1

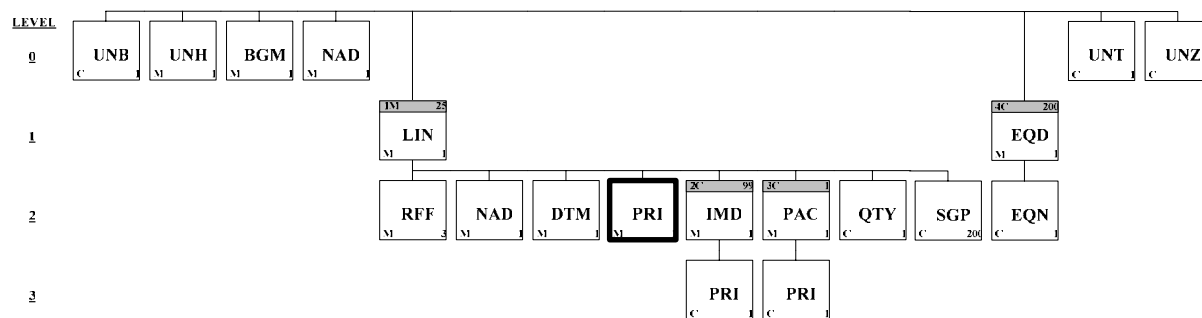
Dependency Notes:

Comments:

Notes: Functie: wordt gebruikt om de datum, zo mogelijk met de tijd, te specificeren waarop de artikelen bij de handelaar afgeleverd worden.

Data Element Summary

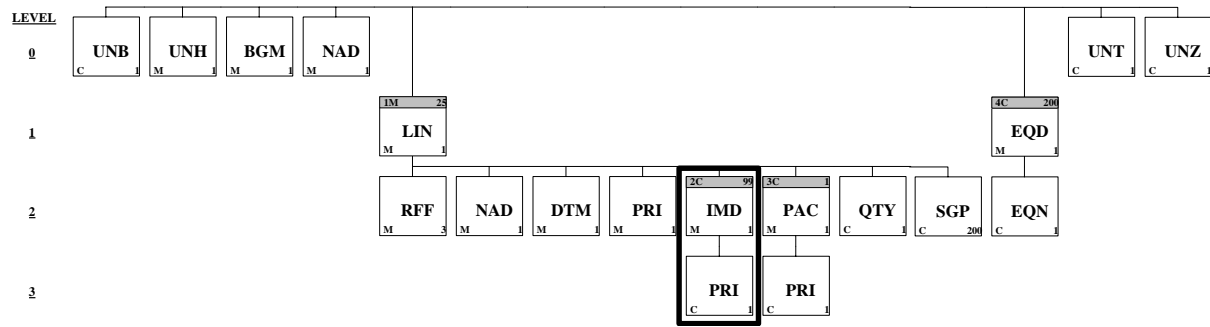
	<u>Data Element</u>	<u>Component Element</u>	<u>Name</u>	<u>Attributes</u>
	C507		DATE/TIME/PERIOD	M
		2005	Date/time/period qualifier	M an..3
		76	Delivery date/time, scheduled for	
Must Use		2380	Date/time/period	C n..35
			Partij afleverdatum/tijd	
			Format: n..12	
Must Use		2379	Date/time/period format qualifier	C an..3
		102	CCYYMMDD	
		203	CCYYMMDDHHMM	



Segment: **PRI** Price Details
Position: 120
Group: Segment Group 1 Mandatory
Level: 2
Usage: Mandatory
Max Use: 1
Dependency Notes:
Comments:
Notes: Functie: wordt gebruikt om de prijs van het artikel te specificeren.

Data Element Summary

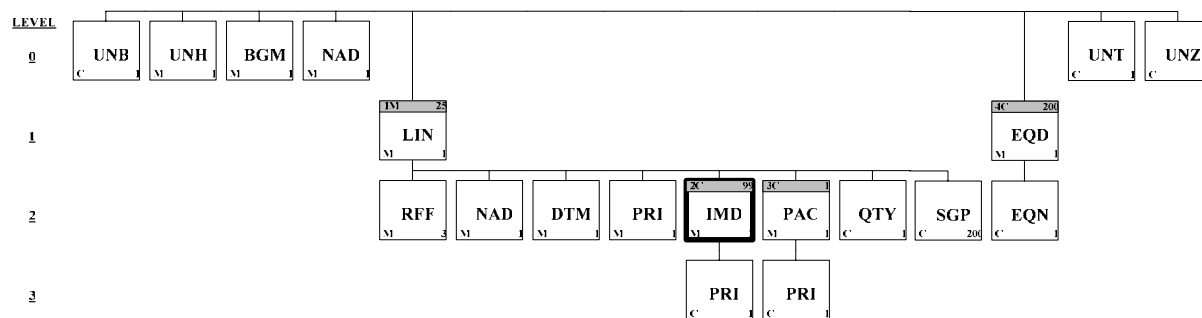
	<u>Data Element</u>	<u>Component Element</u>	<u>Name</u>	<u>Attributes</u>
Must Use	C509		PRICE INFORMATION	C
		5125	Price qualifier	M an..3
			INV Invoice price	
Must Use		5118	Price	C n..15
			Prijs in EURO, kan in drie decimalen achter de decimale punt	
			Fe Format: n..9	
Not Used		5375	Price type, coded	C an..3
Not Used		5387	Price type qualifier	C an..3
Not Used		5284	Unit price basis	C n..9
Not Used		6411	Measure unit qualifier	C an..3
Not Used	5213		SUB-LINE PRICE CHANGE, CODED	C an..3



Group: **IMD** Segment Group 2
Position: 125
Group: Segment Group 1 Mandatory
Level: 2
Usage: Conditional (Optional)
Max Use: 99

Segment Summary

<u>Pos. No.</u>	<u>Seg. ID</u>	<u>Name</u>	<u>Req. Des.</u>	<u>Max. Use</u>	<u>Group: Repeat</u>
125	IMD	Item Description	M	1	
128	PRI	Price Details	C	1	



Segment: **IMD** Item Description
Position: 125 (Trigger Segment)
Group: Segment Group 2 Conditional (Optional)
Level: 2
Usage: Mandatory
Max Use: 1

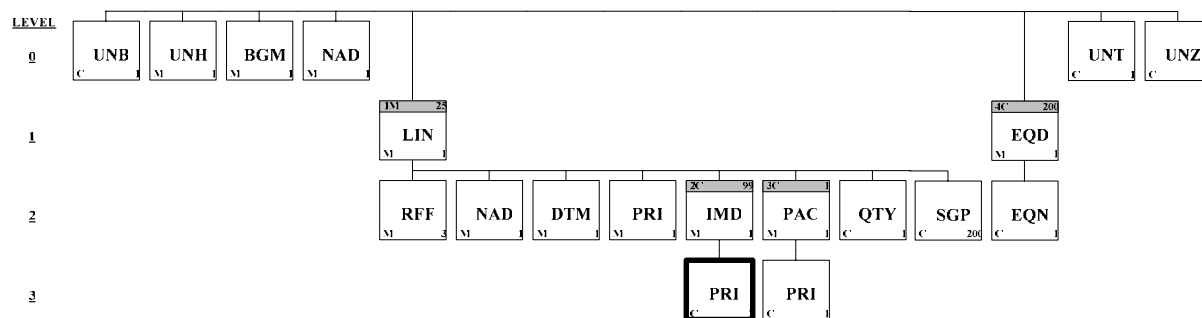
Dependency Notes:

Comments:

Notes: Functie: wordt gebruikt om de sortering- en productkenmerken en de positieve en negatieve keuropmerkingen te specificeren. De MPS-kode van de aanvoerder wordt door de veilingen vermeld in S97 (de veilingen vullen de S97 met gegevens vanuit MPS, dus niet de oorspronkelijke waarde die op de aanvoerbrief staat!).

Data Element Summary

	<u>Data Element</u>	<u>Component Element</u>	<u>Name</u>	<u>Attributes</u>
Not Used	7077		ITEM DESCRIPTION TYPE, CODED	C an..3
Must Use	7081		ITEM CHARACTERISTIC, CODED	C an..3
			Produktkenmerkcode zie codelijst data-elementen FlorEcom, www.florecom.nl/download.htm FE format: an3	
	C273		ITEM DESCRIPTION	C
		7009	Item description identification	C an..7
			Productkenmerkwaarde. Invuling volgens artikelcodeboekjes VBA en FloraHolland/Naaldwijk. FE Format: an..3	
Not Used		1131	Code list qualifier	C an..3
Not Used		3055	Code list responsible agency, coded	C an..3
		7008	Item description	C an..35
			Omschrijving. Indien in 7081 als waarde S99 wordt opgegeven dan kan hier een alternatieve artikelomschrijving worden opgegeven.	
Not Used		7008	Item description	C an..35
Not Used	7383		SURFACE/LAYER INDICATOR, CODED	C an..3



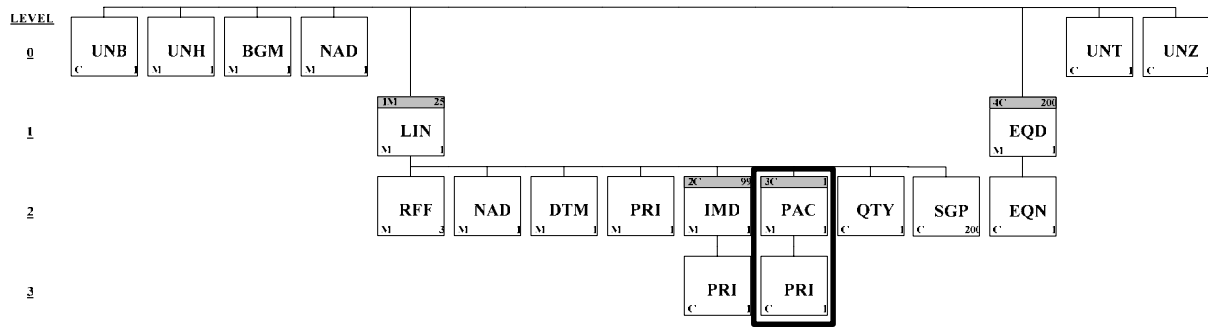
Segment: **PRI** Price Details
Position: 128
Group: Segment Group 2 Conditional (Optional)
Level: 3
Usage: Conditional (Optional)
Max Use: 1

Dependency Notes:
Comments:

Notes: FE-note: Optioneel segment. functie: wordt gebruikt om de prijs van een artikelkenmerk te specificeren. Deze prijs is nog niet bij de stuksprijs van het artikel inbegrepen. Meestal gebruikt bij producttoevoegingen als steeketiket, hoes, etc.

Data Element Summary

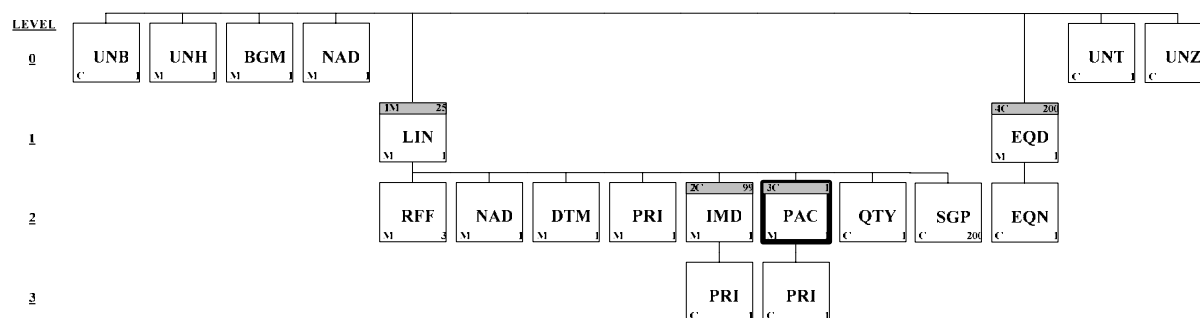
	<u>Data Element</u>	<u>Component Element</u>	<u>Name</u>	<u>Attributes</u>
	C509		PRICE INFORMATION	C
		5125	Price qualifier APT Productkenmerk Prijstoevoeging	M an..3
Must Use		5118	Price FE-note: Productkenmerk prijstoevoeging, Eenheid in euro, drie decimalen achter de decimale punt FE Format: n..9	C n..15
Not Used		5375	Price type, coded	C an..3
Not Used		5387	Price type qualifier	C an..3
Not Used		5284	Unit price basis	C n..9
Not Used		6411	Measure unit qualifier	C an..3
Not Used	5213		SUB-LINE PRICE CHANGE, CODED	C an..3



Group: **PAC** Segment Group 3
Position: 136
Group: Segment Group 1 Mandatory
Level: 2
Usage: Conditional (Optional)
Max Use: 1

Segment Summary

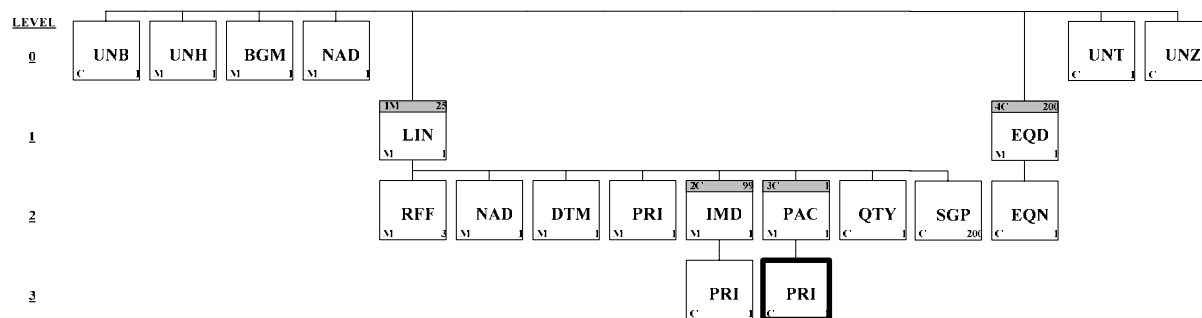
Pos. No.	Seg. ID	Name	Req. Des.	Max. Use	Group: Repeat
136	PAC	Package	M	1	
146	PRI	Price Details	C	1	



Segment: **PAC** Package
Position: 136 (Trigger Segment)
Group: Segment Group 3 Conditional (Optional)
Level: 2
Usage: Mandatory
Max Use: 1
Dependency Notes:
Comments:
Notes: Functie: wordt gebruikt om de emballage te specificeren waarin de artikelen aangeleverd worden.

Data Element Summary

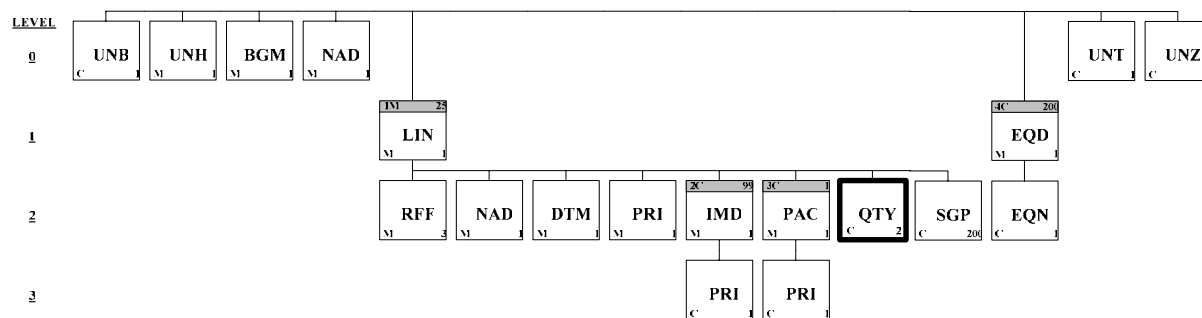
	<u>Data Element</u>	<u>Component Element</u>	<u>Name</u>	<u>Attributes</u>
Not Used	7224		NUMBER OF PACKAGES	C n..8
Not Used	C531		PACKAGING DETAILS	C
Not Used		7075	Packaging level, coded	C an..3
Not Used		7233	Packaging related information, coded	C an..3
Not Used		7073	Packaging terms and conditions, coded	C an..3
Must Use	C202		PACKAGE TYPE	C
Must Use		7065	Type of packages identification	C an..7
			Emballagecode volgens de VBN code lijst.	
			FE Format: an..3	
Not Used		1131	Code list qualifier	C an..3
Not Used		3055	Code list responsible agency, coded	C an..3
Not Used		7064	Type of packages	C an..35
Not Used	C402		PACKAGE TYPE IDENTIFICATION	C
Not Used		7077	Item description type, coded	M an..3
Not Used		7064	Type of packages	M an..35
Not Used		7143	Item number type, coded	C an..3
Not Used		7064	Type of packages	C an..35
Not Used		7143	Item number type, coded	C an..3
Not Used	C532		RETURNABLE PACKAGE DETAILS	C
Not Used		8395	Returnable package freight payment responsibility, coded	C an..3
Not Used		8393	Returnable package load contents, coded	C an..3



Segment: **PRI** Price Details
Position: 146
Group: Segment Group 3 Conditional (Optional)
Level: 3
Usage: Conditional (Optional)
Max Use: 1
Dependency Notes:
Comments:
Notes: Functie: wordt gebruikt om de prijs van de emballage te specificeren.

Data Element Summary

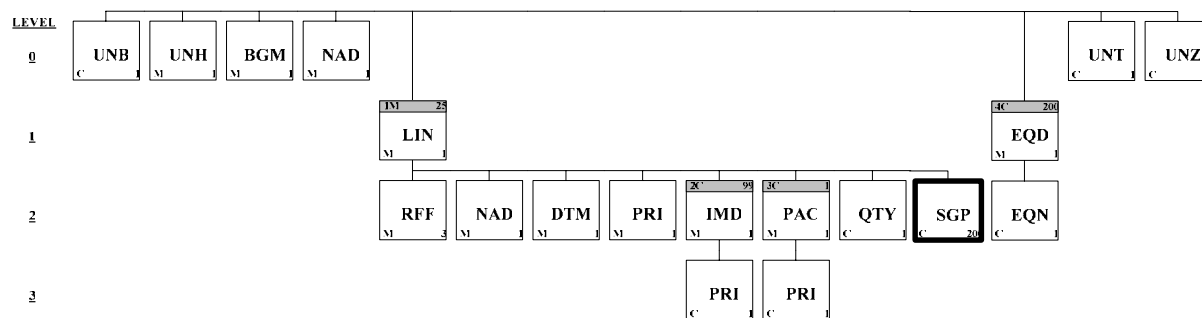
	<u>Data Element</u>	<u>Component Element</u>	<u>Name</u>	<u>Attributes</u>
Must Use	C509		PRICE INFORMATION	C
		5125	Price qualifier PAP Pack price	M an..3
Must Use		5118	Price Fustprijs, Eenheid in euro, drie decimalen achter de komma. Bij huur wordt hier 0 ingevuld en bij 5284 de fusthuurprijs. FE Format: n..9	C n..15
Not Used		5375	Price type, coded	C an..3
		5387	Price type qualifier PRP Promotional price	C an..3
		5284	Unit price basis Fusthuurprijs. Zolang geen tabel beschikbaar is waarin per fustcode de huurprijs FH en huurprijs Bloemenveiling Aalsmeer wordt vermeld, wordt de emballagehuurprijs in dit segment/data element weergegeven.	C n..9
Not Used		6411	Measure unit qualifier	C an..3
Not Used	5213		SUB-LINE PRICE CHANGE, CODED	C an..3



Segment: **QTY** Quantity
Position: 156
Group: Segment Group 1 Mandatory
Level: 2
Usage: Conditional (Optional)
Max Use: 2
Dependency Notes:
Comments:
Notes: Optioneel segment. Functie: wordt gebruikt om het totaal aantal gekochte eenheden te specificeren en het aantal per eenheid.

Data Element Summary

<u>Data Element</u>	<u>Component Element</u>	<u>Name</u>	<u>Attributes</u>
C186		QUANTITY DETAILS	M
	6063	Quantity qualifier	M an..3
		21 Ordered quantity	
		Partij aantal eenheden	
		52 Quantity per pack	
		Partij aantal stuks per eenheid	
	6060	Quantity	M n..15
		FE Format: n..5	
Not Used	6411	Measure unit qualifier	C an..3

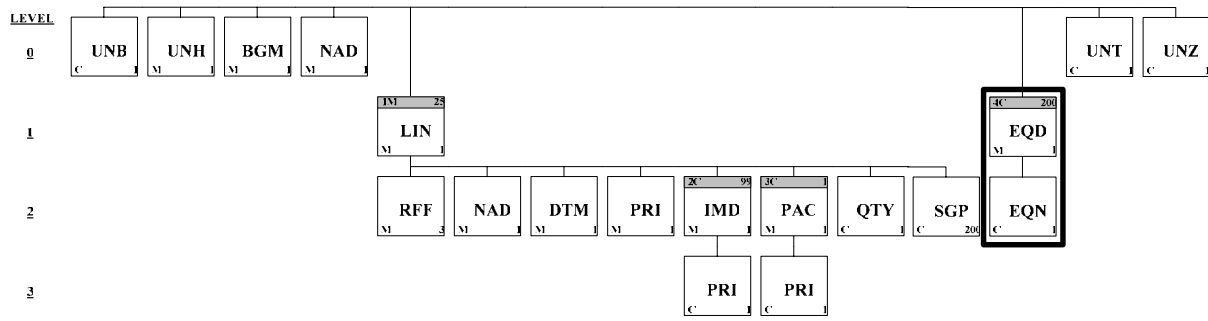


Segment: **SGP** Split Goods Placement
Position: 176
Group: Segment Group 1 Mandatory
Level: 2
Usage: Conditional (Optional)
Max Use: 200
Dependency Notes:
Comments:

Notes: FE-note: Optioneel segment, maar verplicht als er een EQD-EQN groep voorkomt waarnaar dit segment dient te verwijzen. Functie: wordt gebruikt om de belading van een ladingdrager te specificeren.

Data Element Summary

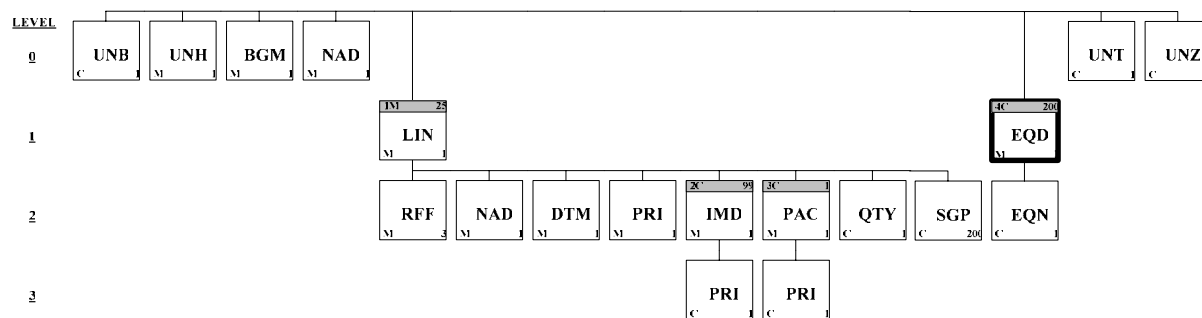
	<u>Data Element</u>	<u>Component Element</u>	<u>Name</u>	<u>Attributes</u>
	C237		EQUIPMENT IDENTIFICATION	M
Must Use		8260	Equipment identification number FE-note: Transportmiddel Identificatie	C an..17
			Bij de VBA bestaat transportmiddel identificatie uit: - aanvoerdernummer - aanvoerbrieffolnummer (eerste brief)	
			Bij FloraHolland/Naaldwijk bestaat transportmiddel identificatie uit: - aanvoerbrieffolnummer (eerste brief)	
			FE Format an..14	
Not Used		1131	Code list qualifier	C an..3
Not Used		3055	Code list responsible agency, coded	C an..3
Must Use	7224		NUMBER OF PACKAGES FE-note: Belading aantal eenheden	C n..8
			FE Format: n..4	



Group: **EQD** Segment Group 4
Position: 186
Group:
Level: 1
Usage: Conditional (Optional)
Max Use: 200

Segment Summary

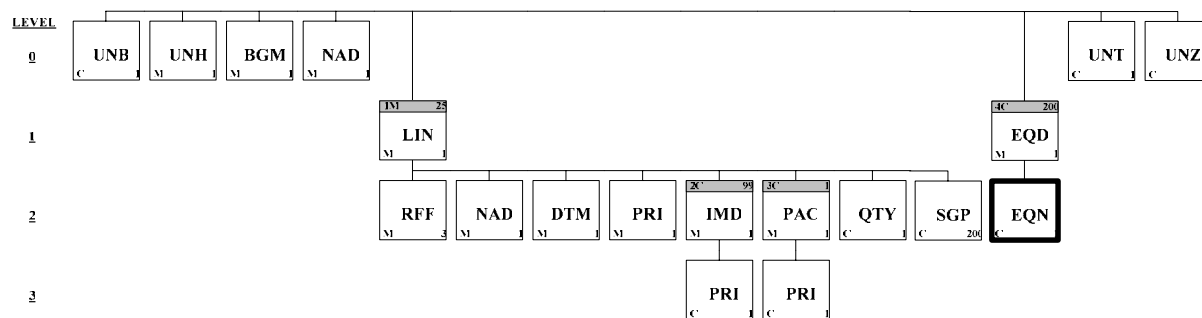
<u>Pos. No.</u>	<u>Seg. ID</u>	<u>Name</u>	<u>Req. Des.</u>	<u>Max. Use</u>	<u>Group: Repeat</u>
186	EQD	Equipment Details	M	1	
196	EQN	Number of Units	C	5	



Segment: **EQD** Equipment Details
Position: 186 (Trigger Segment)
Group: Segment Group 4 Conditional (Optional)
Level: 1
Usage: Mandatory
Max Use: 1
Dependency Notes:
Comments:
Notes: Functie: wordt gebruikt om de ladingdrager te specificeren en te identificeren.

Data Element Summary

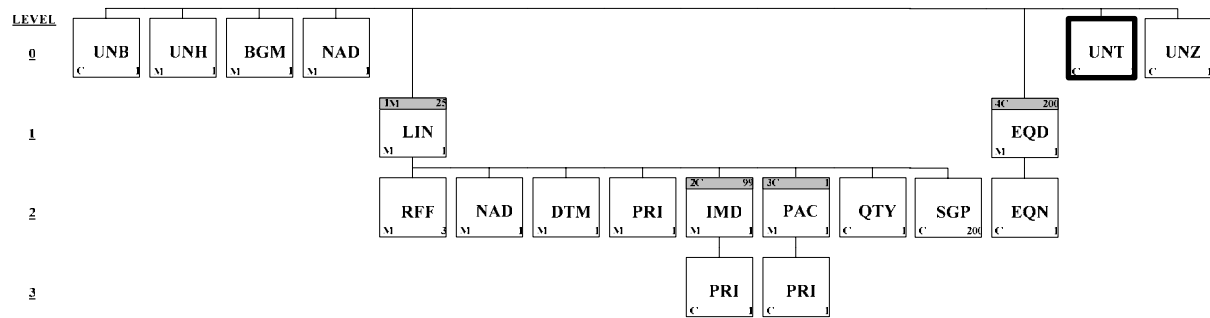
	<u>Data Element</u>	<u>Component Element</u>	<u>Name</u>	<u>Attributes</u>
	8053		EQUIPMENT QUALIFIER BX Boxcar	M an..3
Must Use	C237		EQUIPMENT IDENTIFICATION	C
Must Use		8260	Equipment identification number Transportmiddel identificatie Bij de VBA bestaat transportmiddel identificatie uit: - aanvoerdernummer - aanvoerbrieffolgnummer (eerste brief)	C an..17
			Bij FloraHolland/Naaldwijk bestaat transportmiddel identificatie uit: - aanvoerbrieffolgnummer (eerste brief)	
			FE Format: an..14	
Not Used		1131	Code list qualifier	C an..3
Not Used		3055	Code list responsible agency, coded	C an..3
Must Use	C224		EQUIPMENT SIZE AND TYPE	C
Must Use		8155	Equipment size and type identification Transportmiddeltype code FE Format: an..3	C an..4
Not Used		1131	Code list qualifier	C an..3
Not Used		3055	Code list responsible agency, coded	C an..3
Not Used		8154	Equipment size and type	C an..35
Not Used	8077		EQUIPMENT SUPPLIER, CODED	C an..3
Not Used	8249		EQUIPMENT STATUS, CODED	C an..3
Not Used	8169		FULL/EMPTY INDICATOR, CODED	C an..3



Segment: **EQN** Number of Units
Position: 196
Group: Segment Group 4 Conditional (Optional)
Level: 2
Usage: Conditional (Optional)
Max Use: 5
Dependency Notes:
Comments:
Notes: Functie: wordt gebruikt om het aantal logistieke middelen te specificeren, zoals extra tableaux op een stapelwagen of het aantal legborden op een Deense container.

Data Element Summary

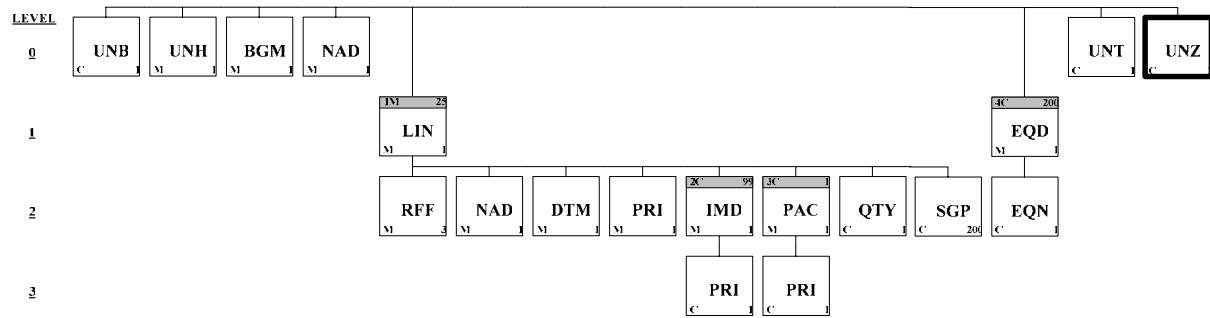
	<u>Data Element</u>	<u>Component Element</u>	<u>Name</u>	<u>Attributes</u>
	C523		NUMBER OF UNIT DETAILS	M
Must Use		6350	Number of units Aantal van het in 6353 gespecificeerde logistieke middel FE Format: n..2	C n..15
Must Use		6353	Number of units qualifier Specificeren van het logistieke middel (zie dataelementenlijst). FE Format: an..3	C an..3



Segment: **UNT** Message Trailer
Position: 206
Group:
Level: 0
Usage: Conditional (Required)
Max Use: 1
Dependency Notes:
Comments:
Notes: FE-note: Verplicht segment. functie: afsluiting van een bericht.

Data Element Summary

<u>Data Element</u>	<u>Component Element</u>	<u>Name</u>	<u>Attributes</u>
0074		NUMBER OF SEGMENTS IN A MESSAGE	M n..6
		Het aantal segmenten in het bericht, waarbij het UNH-segment het 1e segment is en het UNT-segment het laatste segment is wat moet worden meegeteld.	
0062		MESSAGE REFERENCE NUMBER	M an..14
		Het bericht referentienummer is hetzelfde nummer als in data-element 0062 uit UNH.	



Segment: UNZ Interchange Trailer
Position: 216
Group:
Level: 0
Usage: Conditional (Required)
Max Use: 1
Dependency Notes:
Comments:
Notes: Functie: afsluiten van een berichtentransmissie.

Data Element Summary

<u>Data Element</u>	<u>Component Element</u>	<u>Name</u>	<u>Attributes</u>
0036		INTERCHANGE CONTROL COUNT	M n..6
		Controlecijfer, dat het aantal berichten in deze transmissie aanduidt.	
0020		INTERCHANGE CONTROL REFERENCE	M an..14
		Het bericht referentienummer is hetzelfde nummer als in data-element 0020 uit UNB.	

5. Edifact DELMSG documents (examples)

5.1 Example FloraHolland BB

```
UNB+UNOA:2+8714231140184:14+090924:ZZ+060522:1441+SRC06052200177++FHN
1.0++++1'
UNH+SRC06052200177+DELMSG:001:003:EF'
BGM+270'
NAD+BY+90924'
NAD+FLA+10'
LIN+++1234567:VBN:ART:EF'
RFF+ACE:XX2010:A'
RFF+CKN:6'
RFF+ON:1234::0'
NAD+MF+293962'
DTM+76:200605221600:203'
PRI+INV:1.005'
IMD++S01+013'
IMD++S02+030'
IMD++S03+010'
IMD++S04+032'
IMD++S05+002'
IMD++S07+009'
IMD++S08+002'
IMD++S09+011'
IMD++S10+012'
IMD++S11+010'
IMD++S12+001'
IMD++S13+004'
IMD++S14+060'
IMD++S15+050'
IMD++S26+005'
IMD++S27+002'
IMD++S28+004'
IMD++S31+040'
IMD++S32+007'
IMD++S33+001'
IMD++S36+005'
IMD++S37+005'
IMD++S38+005'
IMD++S39+006'
IMD++S40+045'
IMD++S41+020'
IMD++S50+003'
IMD++S51+008'
IMD++S52+012'
IMD++S53+011'
IMD++S54+007'
IMD++S55+002'
IMD++S56+002'
IMD++S57+001'
IMD++S58+003'
IMD++S59+002'
IMD++S60+004'
IMD++S61+001'
IMD++S62+SE'
IMD++S64+200'
IMD++S66+008'
IMD++S99+:::LINNAEUS TEST'
IMD++S62+NL'
PAC+++566'
QTY+21:27'
QTY+52:100'
```

SGP+XX2010+54'
LIN+++1234567:VBN:ART:EF'
RFF+ACE:XX2010:B'
RFF+CKN:6'
RFF+ON:1234::0'
NAD+MF+293962'
DTM+76:200605221600:203'
PRI+INV:0.900'
IMD++K01+163'
IMD++P01+002'
IMD++S05+011'
IMD++S20+050'
IMD++S98+A2'
IMD++S62+NL'
PAC+++566'
QTY+21:27'
QTY+52:100'
SGP+XX2010+54'
EQD+BX+XX2010+1'
EQN+2:19'
UNT+78+SRC06052200177'
UNZ+1+SRC06052200177'

5.2 Example Bloemenveiling Aalsmeer MVA

UNB+UNOA:2+8714231140214:14+7940:ZZ+051116:1340+9616++VBA 1.30++++1'
UNH+1+DELMSG:001:003:EF'
BGM+270'
NAD+BY+7940'
NAD+FLA+1'
LIN+++1234567:VBN:ART:EF'
RFF+ACE:1412:A'
RFF+ON:516116171::1'
NAD+MF+9999'
DTM+76:200611160000:203'
PRI+INV:2.0'
IMD++S01+013'
IMD++S02+030'
IMD++S03+010'
IMD++S04+032'
IMD++S05+002'
IMD++S07+009'
IMD++S08+002'
IMD++S09+011'
IMD++S10+012'
IMD++S11+010'
IMD++S12+001'
IMD++S13+004'
IMD++S14+060'
IMD++S15+050'
IMD++S26+005'
IMD++S27+002'
IMD++S28+004'
IMD++S31+040'
IMD++S32+007'
IMD++S33+001'
IMD++S36+005'
IMD++S37+005'
IMD++S38+005'
IMD++S39+006'
IMD++S40+045'
IMD++S41+020'
IMD++S50+003'
IMD++S51+008'

IMD++S52+012'
IMD++S53+011'
IMD++S54+007'
IMD++S55+002'
IMD++S56+002'
IMD++S57+001'
IMD++S58+003'
IMD++S59+002'
IMD++S60+004'
IMD++S61+001'
IMD++S62+SE'
IMD++S64+200'
IMD++S66+008'
IMD++S99+:::LINNAEUS TEST'
PAC+++346'
PRI+PAP:0.51'
QTY+21:11'
QTY+52:10'
SGP+1135001412+11'
EQD+BX+1135001412+2'
EQN+2:11'
UNT+60+1'
UNZ+1+9616'